

2021 PBA ROTH 42



Oil Pattern Distance: 42 Feet **Reverse Brush Drop:** 38 Feet **Oil Per Board:** 50 uL
Forward Oil Total: 13.8 mL **Reverse Oil Total:** 12.5 mL **Volume Oil Total:** 26.3 mL
Forward Boards Crossed: 276 Boards **Reverse Boards Crossed:** 250 Boards **Total Boards Crossed:** 526 Boards

Start	Stop	Loads	Speed	Crossed	Start	End	Feet	T.Oil
1	2L 2R	2	14	74	0.0	1.9	1.9	3700
2	7L 7R	2	18	54	1.9	7.0	5.1	2700
3	9L 9R	2	18	46	7.0	12.1	5.1	2300
4	11L 11R	3	18	57	12.1	19.7	7.6	2850
5	13L 13R	3	22	45	19.7	29.0	9.3	2250
6	2L 2R	0	22	0	29.0	38.0	9.0	0
7	2L 2R	0	30	0	38.0	42.0	4.0	0

Forward Reverse More

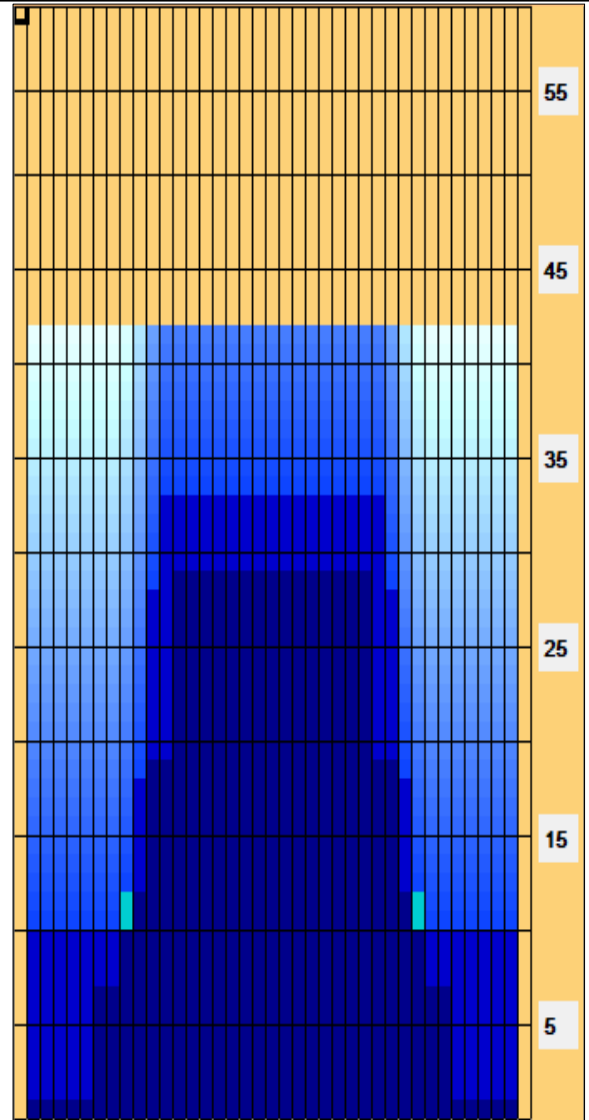
Start	Stop	Loads	Speed	Crossed	Start	End	Feet	T.Oil
1	2L 2R	0	30	0	42.0	33.0	-9.0	0
2	12L 12R	2	18	34	33.0	27.9	-5.1	1700
3	11L 11R	5	14	95	27.9	18.0	-9.9	4750
4	10L 10R	4	14	84	18.0	10.1	-7.9	4200
5	2L 2R	1	14	37	10.1	8.2	-1.9	1850
6	2L 2R	0	14	0	8.2	0.0	-8.2	0

Forward Reverse More

Conditioner:
Type In or Select One

TransferType:
Type In or Select One

- Forward
- Reverse
- Combined
- Buff



Item	3L-7L:18L-18R	8L-12L:18L-18R	13L-17L:18L-18R	18L-18R:17R-13R	18L-18R:12R-8R	18L-18R:7R-3R
Description	Outside Track:Middle	Middle Track:Middle	Inside Track:Middle	Middle: Inside Track	Middle:Middle Track	Middle:Outside Track
Track Zone Ratio	7.06	1.9	1	1	1.9	7.06

